

Passport Business Solutions™

version 12

Passport Business Solutions™ is a fully integrated accounting and business software solution designed to provide greater control over company operations and profitability. Passport Business Solutions products are an evolution of the world-renowned software from the former Realworld Corporation.

With thousands of installations of Passport Business Solutions, Passport is committed to providing excellence in customer care and ongoing, innovative product development. Our company goal is to assist clients in achieving their critical business objectives.

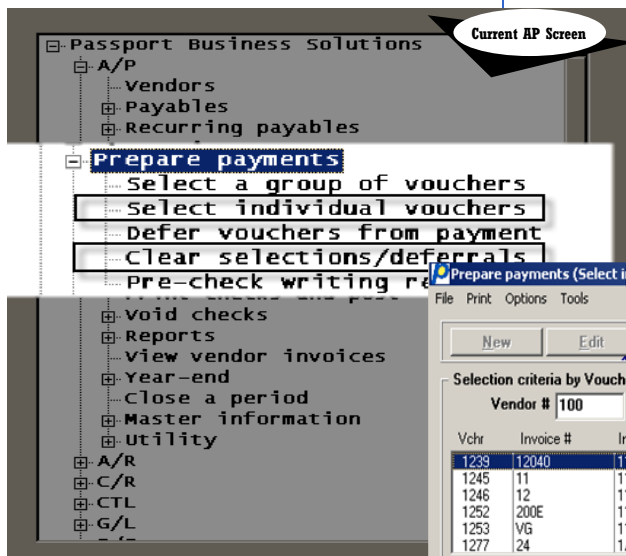
Passport Business Solutions is sold and supported by our network of partners throughout the US, Canada and the Caribbean.

Passport Business Solutions (PBS™) offers strong transactions trails, multi-year general ledger capability, as well as versatile reporting and data import/export options. PBS™ will allow you to implement all appropriate GAAP standards via procedures and reporting built into the system.

The graphical enhancements to Passport Business Solutions allow us to provide a wide variety of business process improvements in the new Version 12. This means improved performance - more work accomplished in less time with fewer errors.

- Graphical design provides improved user experience
- Tabbed screens allows faster processing and transitions
- A static menu design keeps important functions right at your finger tips no matter what screen you're in
- The PBS Navigator™ - this new Version 12-only utility opens a window to show source document, source transactions, and any related distributions after posting
- PBS™ Version 12 adheres to familiar Microsoft Windows® standards throughout, including keyboard shortcuts and tab key function
- All original robust business logic has been retained
- All standard function keys actions were retained
- Easy access online documentation

Passport Software also offers fully integrated solutions for Manufacturing, Retail, and Distribution operations.



Prepare payments (Select individual vouchers) Company 00 XYZ Company

File Print Options Tools

New Edit Save Save / New Delete Cancel Exit

Selection criteria by Voucher #

Vendor # 100 Vermont Metal Products

Vchr	Invoice #	Inv date	P.O. #	Due date	Inv Balance *	Disc Balance	Net Due	Reference	Status
1239	12040	11/03/08		12/10/08	100.00	2.00	98.00		Open
1245	11	11/09/08	6261	12/10/08	123.00	2.46	120.54		Open
1246	12	11/09/08		12/10/08	123.00	2.46	120.54		Open
1252	200E	11/17/08		12/10/08	250.00	5.00	245.00		Selected
1253	VG	11/17/08		12/10/08	1,000.00	20.00	980.00		Selected
1277	24	1/09/09		2/10/09	323.00	6.46	316.54		Selected

* = Partially Paid

Full payment Partial payment Cancel selection

General Vendor info Notes

Vchr #	Invoice #	Payment amount	Disc amount	Net amount
1252	200E	11.00	.00	11.00
1253	VG	12.00	.00	12.00
1277	24	323.00	6.46	316.54
1284	123E3E	12.00	.24	11.76
1285	1234	11.00	.22	10.78

Partial payment:

Discount amount:

Save partial pmt Exit partial pmt

Total check: 369.00 6.92 362.08

<F5> = Full payment, <SF5> = Partial payment

Passport Business Solutions is available in Windows®, UNIX and Linux versions. Bring the user-friendly graphical look and feel to PBS™ operating in a UNIX or Linux environment with our Thin Client technology.

Passport Software, Inc.
181 Waukegan Road, Ste 200
Northfield, Illinois 60093
800.969.7900

www.pass-port.com

Passport Business Solutions, PBS and PBS Navigator are trademarks of Passport Software, Inc. Copyright, Passport Software, Inc. © 2010. All rights reserved. Windows is a registered trademark of Microsoft Corporation in the United States and other countries. The additional names of companies or products may be the intellectual property of their respective owners.